

Big Bear Model Rail DCC Controller Program

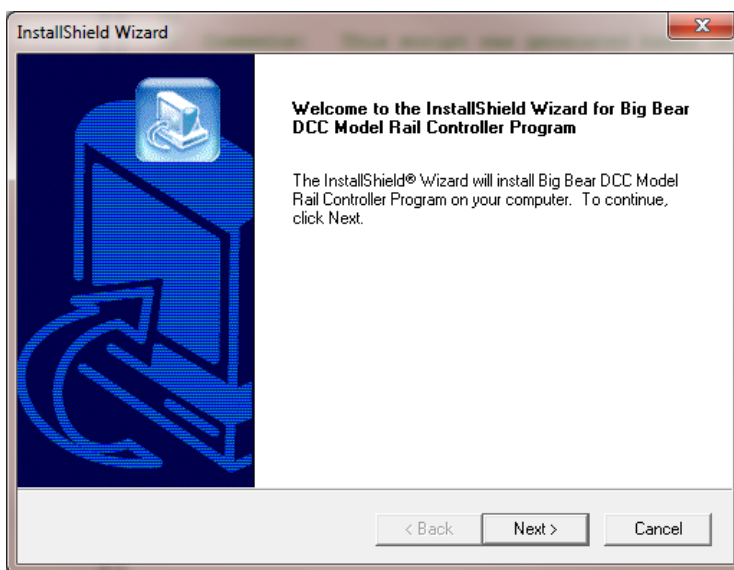
Installation Guide

➔ Supplied on CD:

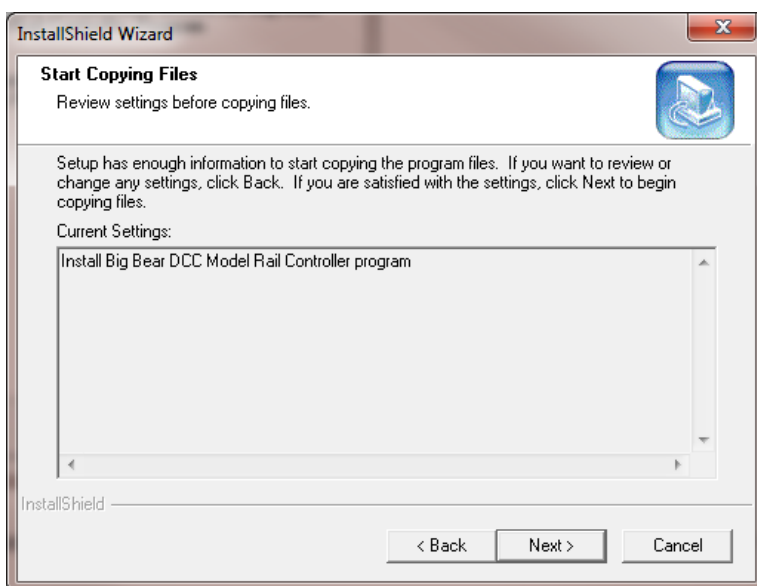
Insert the CD into your computer, the installation package should start up automatically. In the event that the installation does not start by itself, view the contents of the CD using Explorer and run the file **setup.exe**

➔ Downloaded from the website:

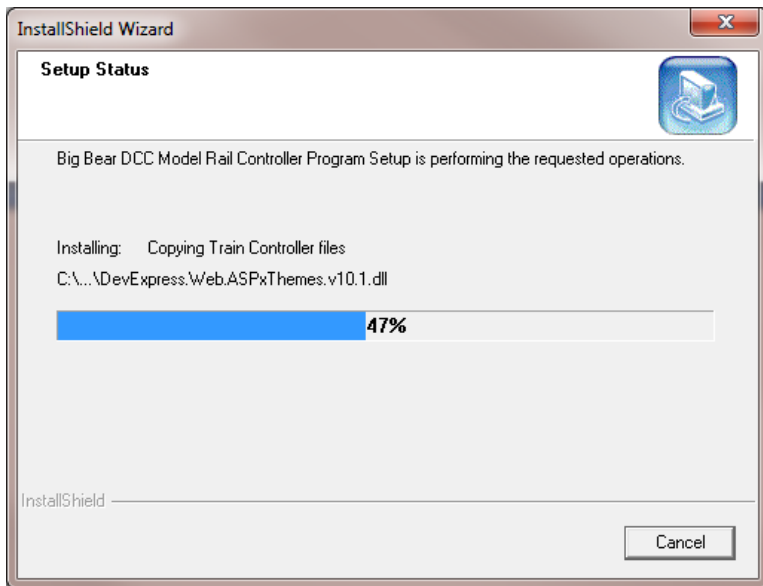
Download and run the file (right click ➔ Run or Double Click the file)



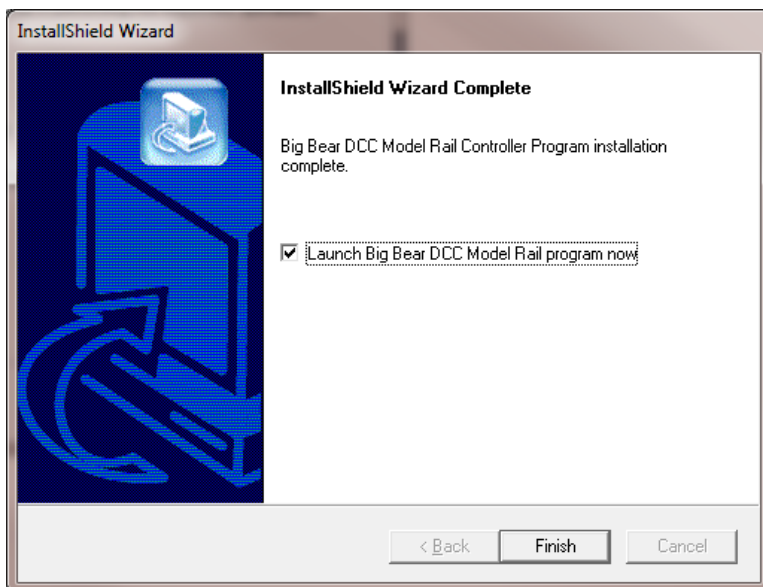
Confirmation that installation has commenced is indicated with the above panel. Click Next > to continue.



Following some checks the installer will confirm that your computer is compatible with the program with the above screen, press Next >

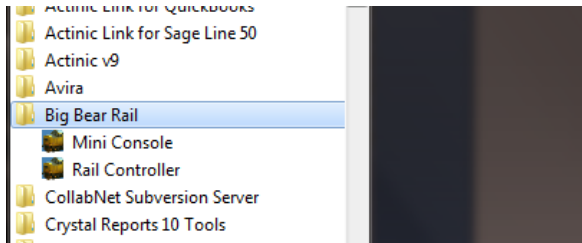


Installation will proceed and successful completion signalled by the panel shown below. To launch the Big Bear DCC Controller straight away, tick the box provided then press finish.

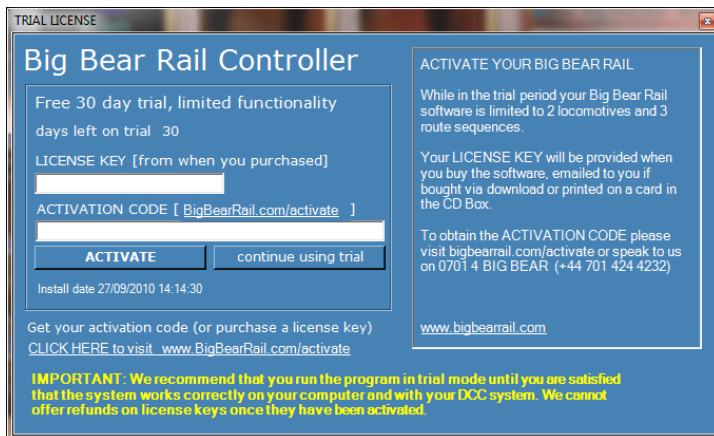


Running Big Bear

From Window's Start Menu locate **Big Bear Rail** and select **Rail Controller** for the full **Big Bear DCC Model Rail Controller** or **Mini Console** for an individual throttle control (No track control or configuration)



Licensing



The Big Bear program is activated by a license key that was supplied with the packaging or emailed to you during the download purchase. The system will operate for 30 days with a limit of 2 locomotives in Trial Mode.

WE RECOMMEND THAT YOU FIRST CONFIGURE YOUR BIG BEAR CONTROLLER IN TRIAL MODE TO ENSURE THAT IT WORKS WITH YOUR DCC CONTROLLER TO YOUR SATISFACTION. REFUNDS CANNOT BE MADE ONCE AN ACTIVATION KEY HAS BEEN GENERATED.

To use Big Bear in trial mode, press [**continue using trial**] every time you launch start. Bib Bear will operate for 30 days in trial mode but you will be limited to two locomotives in your fleet. *Don't worry if you have more than two locomotives on your layout, it just means Big Bear will control two of them at max.*

ACTIVATING YOUR BIG BEAR

When you are satisfied that the software works under trial mode you are ready to enter the license key and to take advantage of the full features offered by your Big Bear software. With your purchase you will have received a 12-digit License Key (or purchase number). Go to www.bigbearrail.com/activate and generate an ACTIVATION CODE. In the blue box when you start up Big Bear, enter both numbers and press [ACTIVATE].

Your Activation Code is valid for 3 days. If you not use it in this time you will need to visit the website to get another one. If you don't have access to the web please call 0701 4 BIG BEAR (0701 4 244 232) during office hours.

Adding New Feature and Extra Locomotives

Having activated Big Bear you can add support for more locomotives and other features as they come available. This means that you can purchase a license suitable for your layout and as you add more trains, you can simply upgrade as needed.

To add more features go to the Configuration tab and select Licensing. Enter the license key/purchase number for the extra locos or feature plus the activation code obtained from www.bigbearrail.com/activate and you're done.

New Features as and when they are made available may also require downloading a new version of the program. You will not lose your layout configuration.

Learning How to Use Big Bear

The Help tab on the Big Bear software provides instructions on how to configure and use your Big Bear software. For further assistance visit www.bigbearrail.com or you may ask questions at the forum www.bigbearrail.com/forum



Join the Facebook group **BigBearRail**

The Big Bear DCC Model Rail Controller is developed by Blue Tang Web Systems Ltd (www.bluetang.co.uk)